



Dusemond
Study Programmes

CONCERNING NICE STREET

Great trips with Dusemond.

Let's



Go!



NOTES ON THIS EXCURSION

Cirencester is...

a unique excursion. This gem of a village is often paired with an excursion to Bourton On The Water (Check with you AM) and really encompasses the greatness that the Cotswolds has to offer. During the summer the value of this trip is further emphasised especially due to the walking tour which explores Cirencester's history and some iconic locations. Make sure you explore Cirencester for yourself whilst showing the students around. Take lots of pictures with your Dusemond banner and make sure you have fun!

Bene/Rupert



ESSENTIAL INFO

What to do if..?

If there is a problem, call your AM

Driver management...?

Make sure you take your driver's name and number, then arrange a pick up point/time

Emergency number...?

Make sure that each student has the emergency number for your centre

Keeping your centre informed...?

Let your AM know when you have got to the village. Let the AM know when you have left to return to the centre.

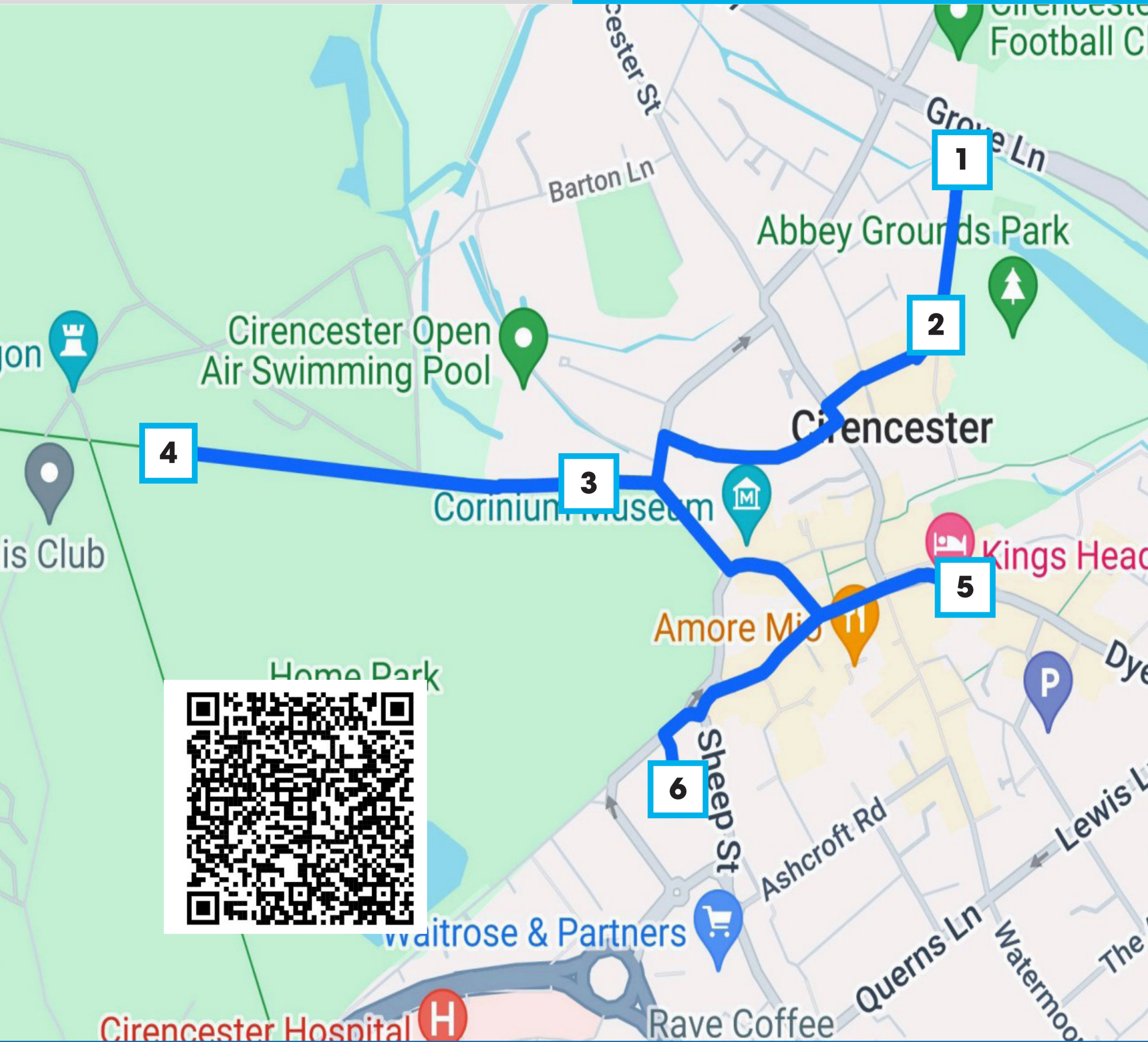
Managing timings...?

Once you have finished your walking tour allocate an amount of time for free time, give yourself time to get walk to the bus (10 minutes) and bear in mind that some students will be late... so make the meeting point earlier than necessary!



- 1. Cirencester's current mayor Joe Harris became the country's youngest ever county councillor. At just 20-years-old, he won the most votes in the Cirencester Park ward election to take his seat in Shire Hall.**
- 2. When a tie occurs in an election, it is said that the two drawing candidates must toss a coin. The first time this ever happened was in a by-election in Cirencester in 1892. The Conservative Party candidate and the Liberal Party candidate received exactly the same number of votes. However, the coin toss method was shunned in favour of holding another election with the Liberals winning that one.**
- 3. Former workers at Cirencester's King's Head Hotel have reported sightings of a number of ghoulish guests.**
- 4. In 1549, King Henry VIII ordered that Cirencester Abbey, which at the time was 400 years old, was pulled down. The rubble from the demolition was used in the town's new buildings.**
- 5. The Royal Agricultural University was set up in 1842 and was the first agricultural college in the English speaking world. It is the world's oldest farming university.**

CIRENCESTER



1 NORMAN ARCH

2 ABBEY GROUNDS

3 CECILY HILL

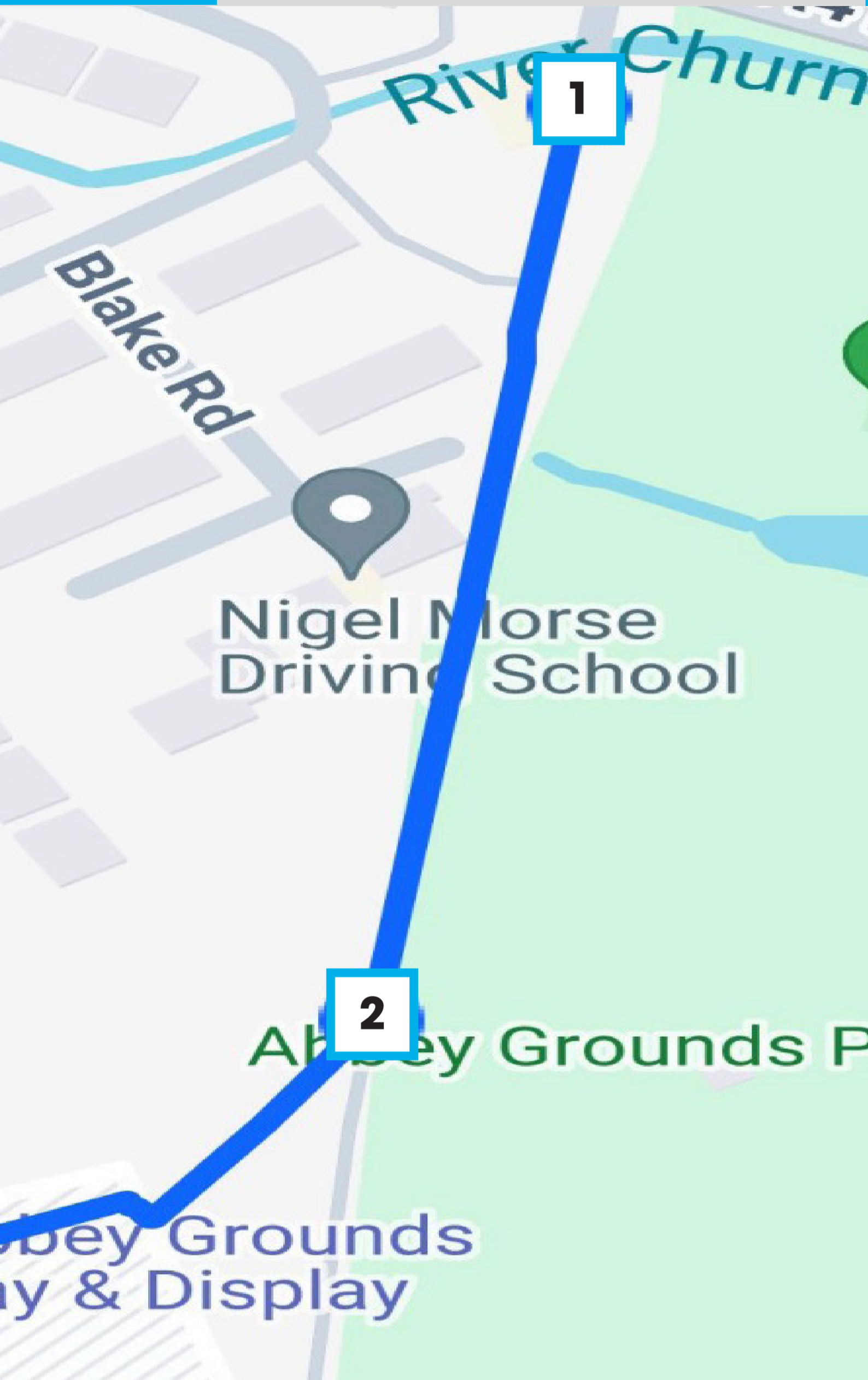
4 YEW HEDGE/BATHHURST ESTATE

5 CORN HALL

6 OLD CIRENCESTER RAILWAY STA-
TION

1

NORMAN ARCH



DIRECTIONS

You will be told your starting point depending on your coach drop off point.

TAKE NOTE:

Set a meeting with your driver and group to outline the day plan and pick up point and time.



QUIZ QUESTIONS



1. What does ESTER mean?

- a. It was a walled city;
- b. It had a river;
- c. It was invaded.

English towns ending in **ESTER** indicates that the town was built by the **Romans**.

2. The abbey was founded by Henry I around AD 1117, on the site of a Saxon church which in turn stood on the site of a Roman church. But what is an a Abbey?

- a. a type of ancient marketplace;
- b. a complex of buildings used by a community of monks or nuns;
- c. a fortified military outpost.



FAST FACTS

WHEN?

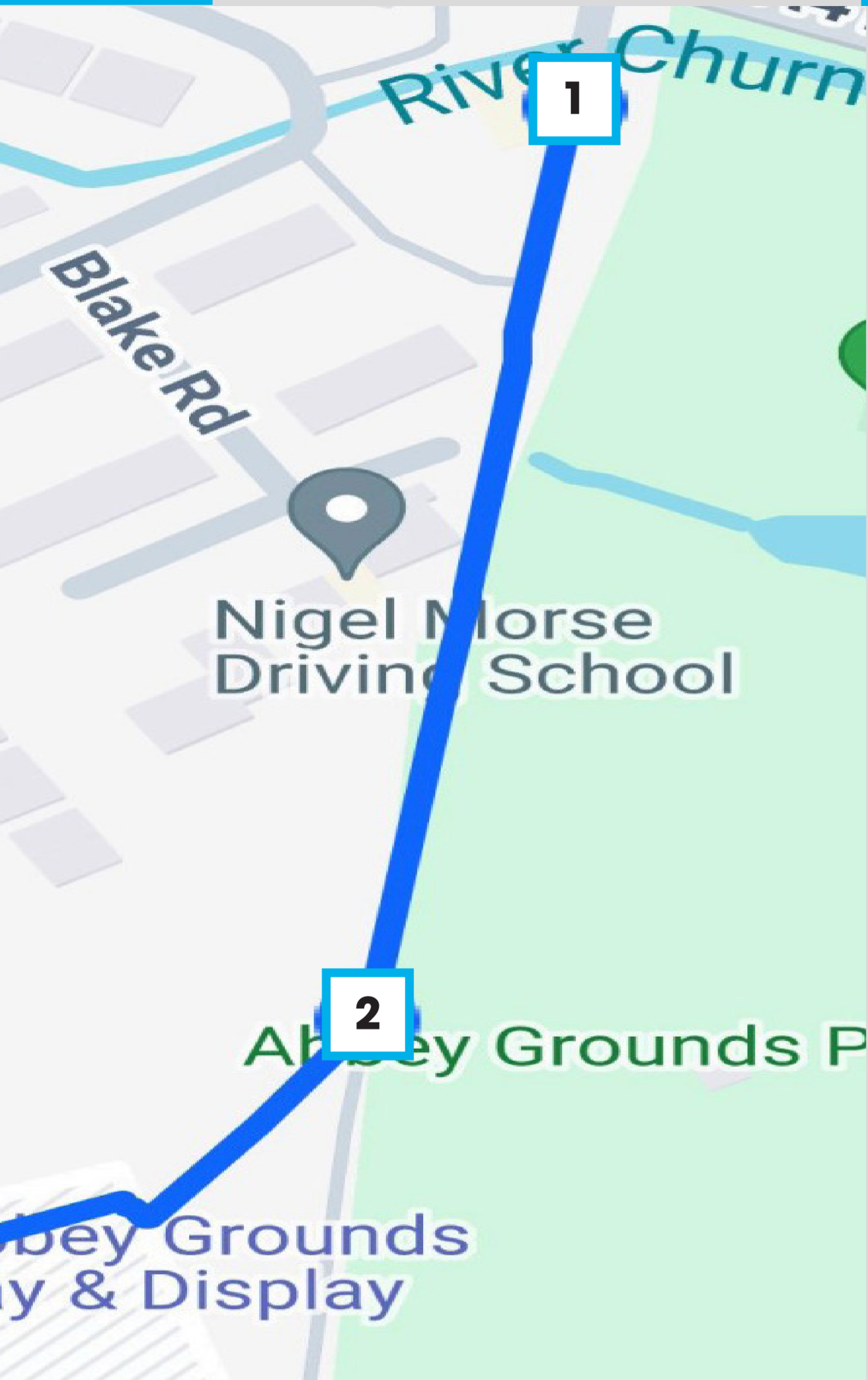
Built in 1180.

WHAT?

A gateway to the Augustinian St Mary's Abbey.

POINTS OF INTEREST

At the northern extremity of Abbey Grounds in historic Cirencester stands the last remains of Cirencester Abbey. It is now the oldest standing building in the town, and the only part of the abbey still standing above ground.



DIRECTIONS

Walk down the road away from the arch. The park should be on your left.

TAKE NOTE:

When speaking to the group be mindful of the people around you, try keeping the group close to you and on one side of the road.



1. How many acres is the park?
(closest guess wins)

3000 acres.

2. In Roman times, Cirencester, known as 'Corinium Dobunorum', was the second largest town. What was the first?

London



FAST FACTS

WHEN?

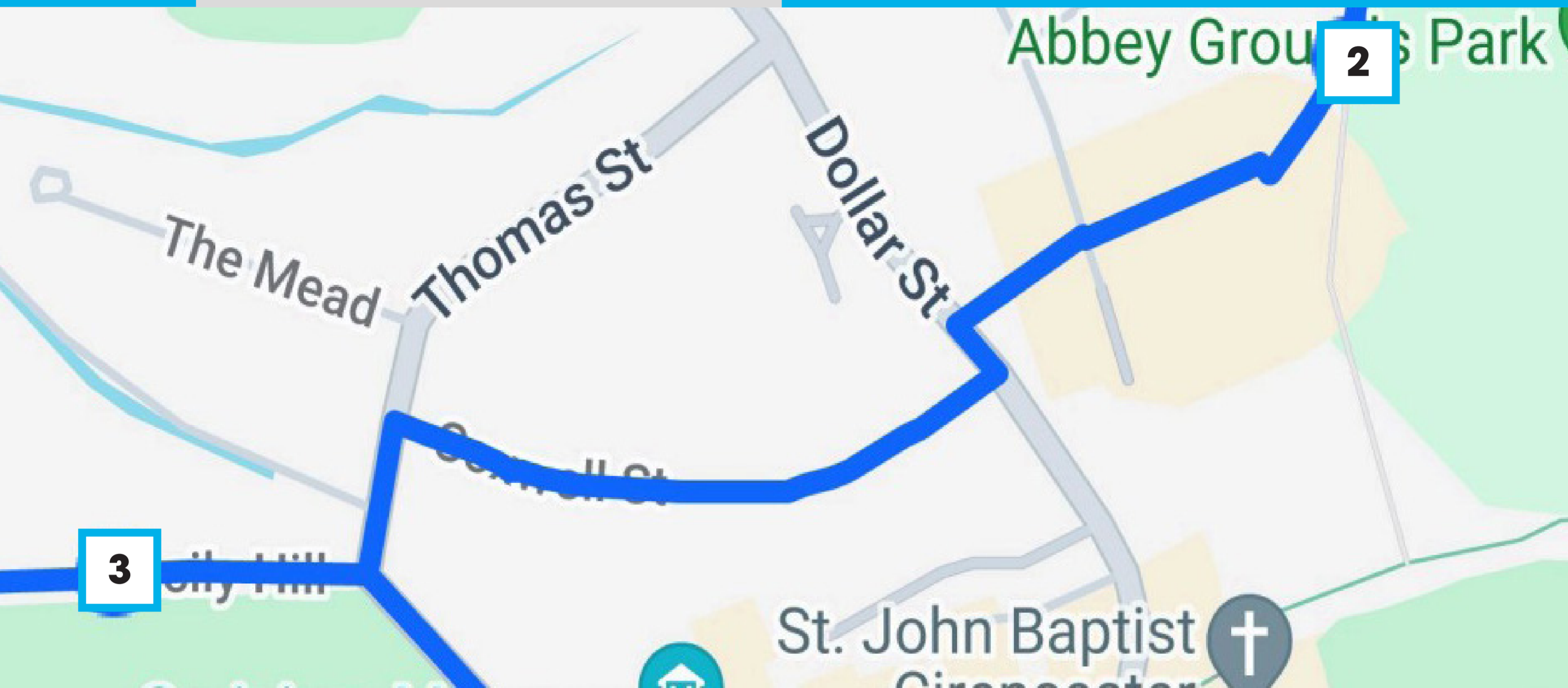
The date of the park is unknown but the buildings in the park go back as far as 1176.

WHAT?

An award winning park which contains the Norman Arch.

POINTS OF INTEREST

The grounds contain unique features due to it being hidden by the market place, yet it remains right next to the town centre.



With the grounds behind you, follow the road as it snakes down towards Dollar St, turn left onto Dollar Street, cross over and turn right.

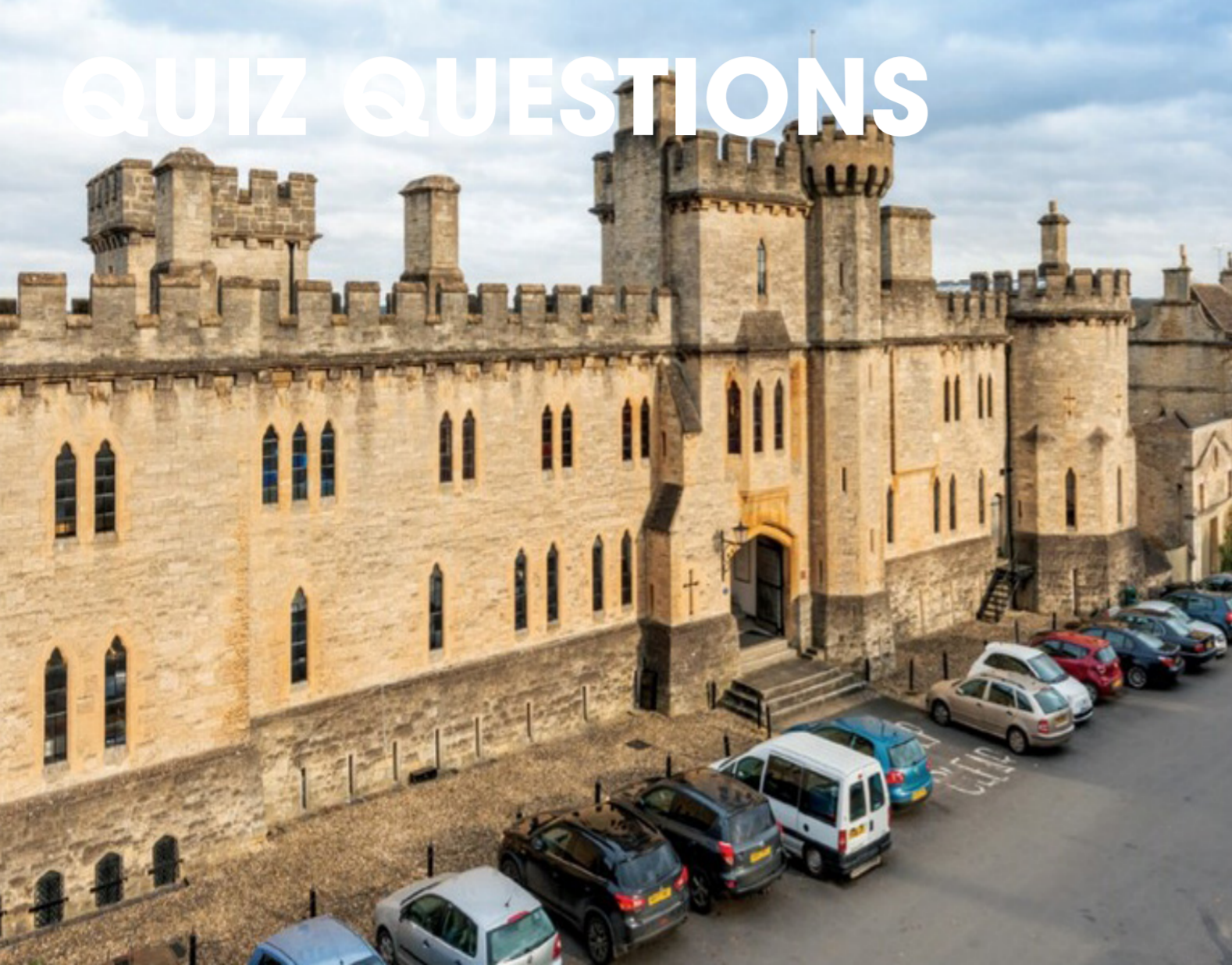
Follow the road until it turns left and then turn right when you see a park.

TAKE NOTE:

When on a walkway make sure you aren't blocking the path for other people when talking to the group!



QUIZ QUESTIONS



2. This was a former military institution also known as the barracks. What are barracks?

- a. a large, enclosed marketplace where farmers sell their produce.
- b. buildings used to house military personnel.
- c. fortified towers used in medieval castles for archers and lookouts.

1. During the Second World War they became the local base for the Home Guard. What was the Home Guard?
- a. a group of civilian volunteers who managed post offices during WWII.
 - b. a volunteer defense organisation during WW II.
 - c. elite soldiers tasked with protecting the royal family in medieval England.



FAST FACTS

WHEN?

Built in 1857.

WHAT?

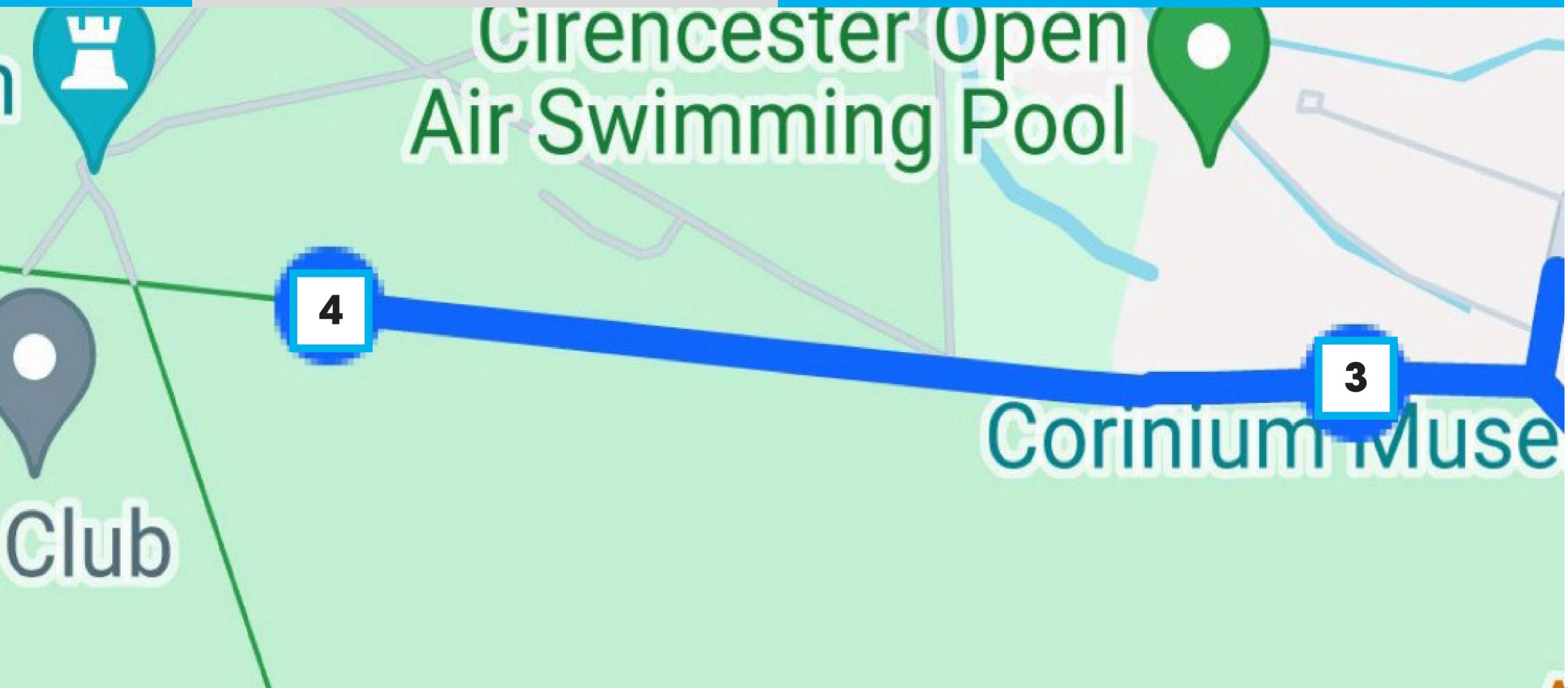
A former military installation.

POINTS OF INTEREST

Recently it was used by Cirencester College, who gave it the name 'The Castle'. Cirencester College moved out of the Castle in 2013 but the Castle is still used for commercial purposes.

4

YEW HEDGE/BA-
THURST ESTATE



Keep walking past Cecily Hill until you reach the Estate. You are looking for a large hedge.

TAKE NOTE:

You may not be able to see the hedge so warn the group in advance, but use the park to take some pictures, don't forget your Dusemond banner!



QUIZ QUESTIONS



1. The hedge is trimmed annually in August by two men. How long does it take them?

- a. 12 days;
- b. 19 days;
- c. 6 days.

2. The house has the tallest yew hedge in the world. How tall is it?

Closest guess wins

13.1 m (43 ft)



FAST FACTS

WHEN?

Planted in 1720.

WHAT?

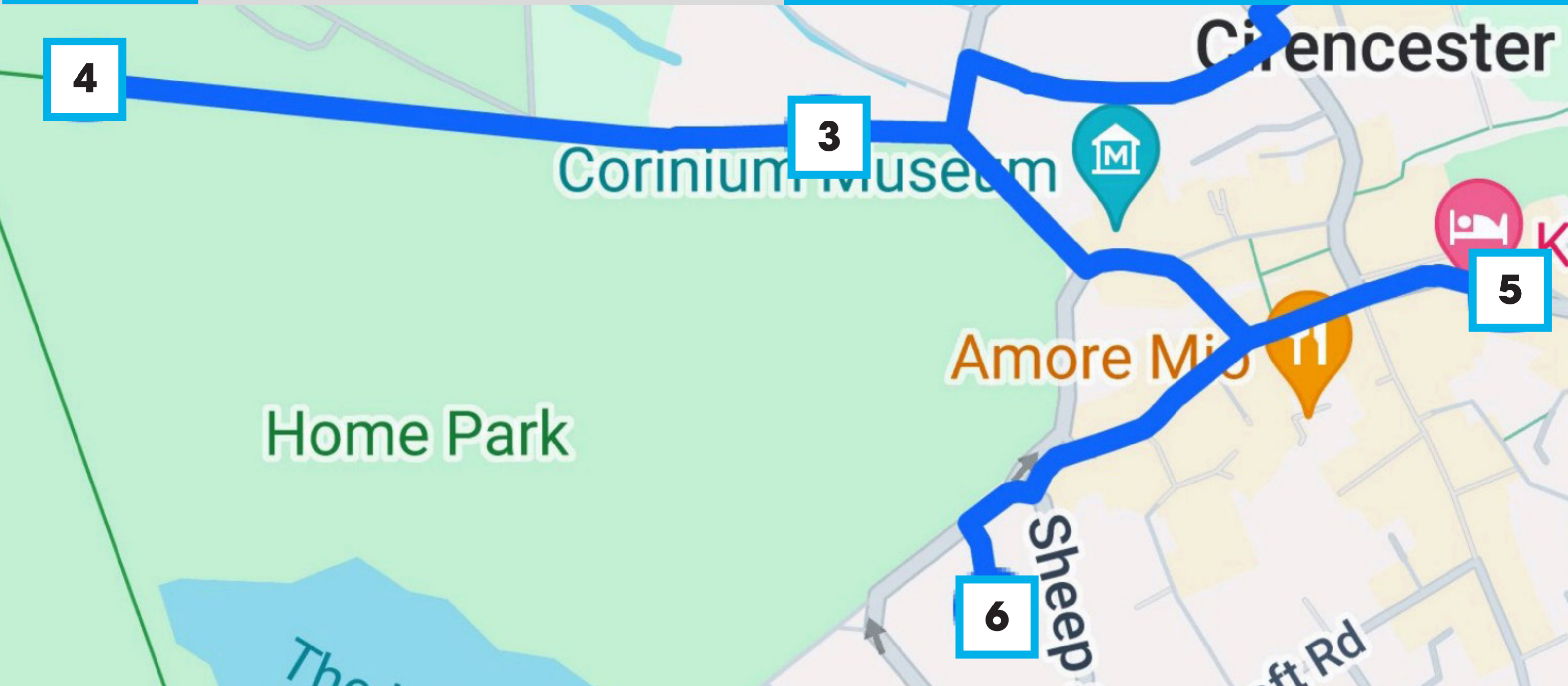
The biggest yew hedge in the world in a park belonging to Earl Bathurst.

POINTS OF INTEREST

Cirencester Park is a country house in the parish of Cirencester in Gloucestershire, England, and is the seat of the Bathurst family, Earls Bathurst. It is a Grade II listed building. The gardens are Grade I listed on the Register of Historic Parks and Gardens.

5

CORN HALL



Walk back down the route you came, past Cecily Hill and then turn right down the road. Where the road splits take the left and follow the road until it ends.

Take the left and follow the road as it takes a slight right, Corn Hall is an indoor market.

TAKE NOTE:

When walking along busy roads ensure the group is sticking to the paths and leaving space for other people



QUIZ QUESTIONS



2. In the mid-19th century, a group of local businessmen decided to form a private company, to finance and commission an exchange for the town. What product did they exchange?

(Hint it's in the name)

Corn

1. Which one of these is not in the Corn Hall?

- a. School of art;
- b. Library;
- c. Reading Room
- d. apartments.



FAST FACTS

WHEN?

Built in 1863.

WHAT?

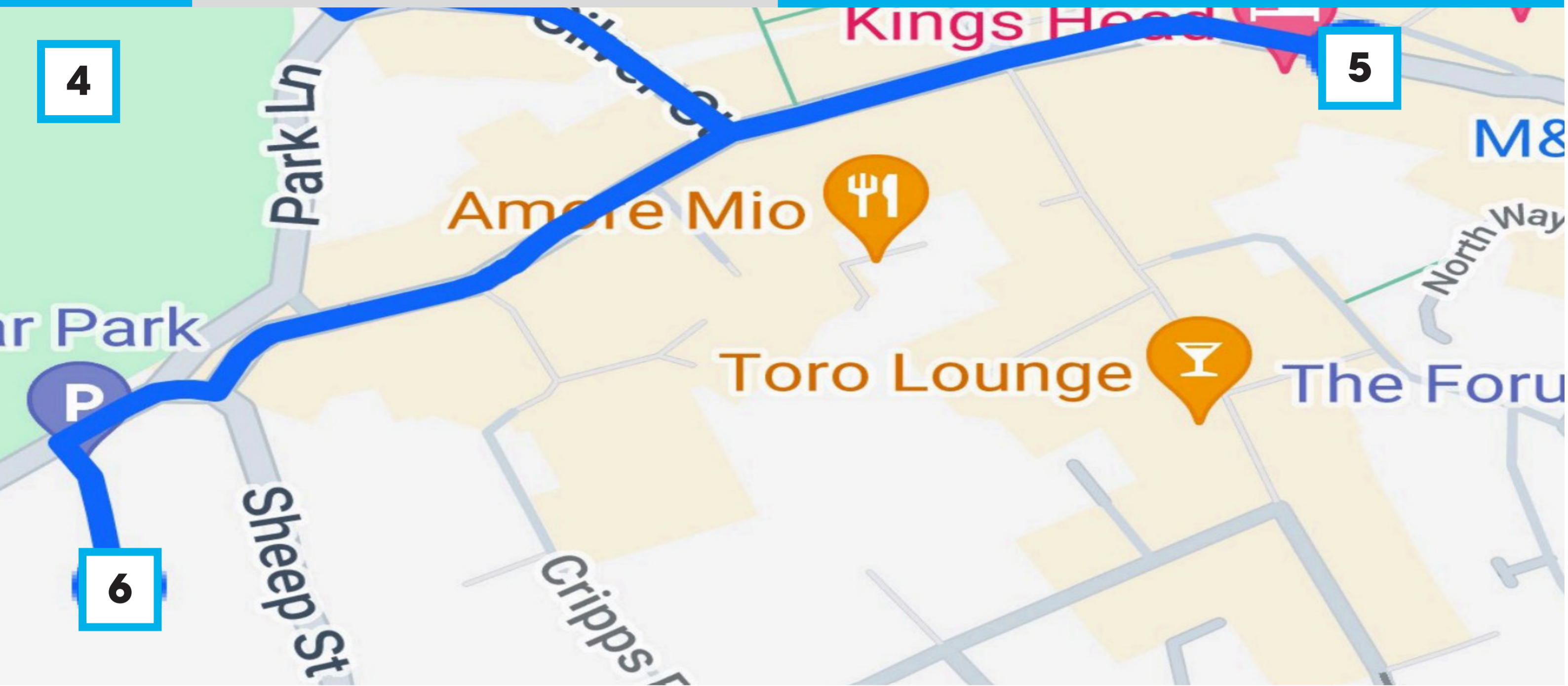
An old market place.

POINTS OF INTEREST

The Cirencester Corn Hall Company was founded in 1861 and negotiated to rent a plot of land at the heart of the town from Henry George Earl Bathurst for a sum of £45 per annum for a term of 500 years. The only stipulation was that the building must never be used for “political purposes”!

6

OLD CIRENCESTER RAILWAY STATION



Walk back down the road but carry on past the turning where you previously came from.

After crossing Sheep Street turn left and the Old Station should be in this road.

TAKE NOTE:

Cross at zebra crossings and wait for the green man, even if it means taking a slightly longer route.

This is a good time to update your AM!



NEWS

2. The Cotswold District Council is investing into The Old Station in Cirencester.

How much money will they invest to attempt to rennovate the station?

- a. £160,000
- b. £200,500
- c. £50,000

FAST FACTS

WHEN?

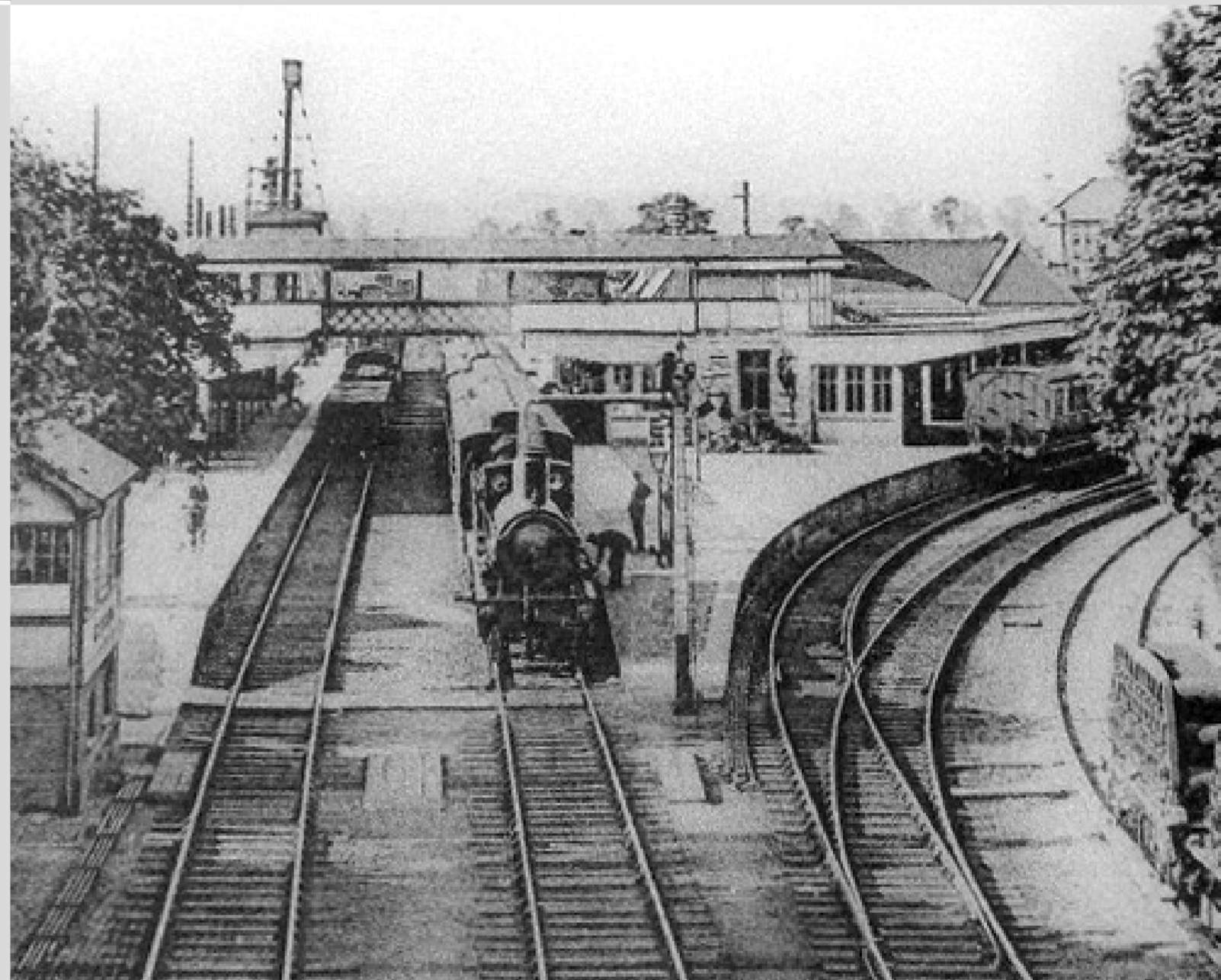
Originally built in 1841.

WHAT?

Cirencester Town railway station was one of three railway stations which formerly served the town.

1. The architect was called Brunel and he revolutionised engineering by designing what item?

- a. the first steam train;
- b. the first purpose-built transatlantic steamship;
- c. the first electric car.



POINTS OF INTEREST

The station has had its fair share of bad luck. On 12 September 1874 as the first train from Kemble Junction was entering the station the engine ran off the rails.

7 April 1948 in the packing office a stove pipe overheated and ignited the ceiling joists.

The station closed to passengers on 6 April 1964.