

CHELT ENHAM



Great trips with this programme

Let's



Go!



NOTES ON THIS WALKING TOUR

Cheltenham is...

where the students will be spending the majority of their time once in the UK. It is important that we should show them around properly, and make them aware of the beautiful town which they will be staying in! They will get an afternoon in Cheltenham and can spend their free time there, so make them feel welcome and comfortable!

Bene/Rupert



ESSENTIAL INFO

What to do if..?

If there is a problem, call your AM

Emergency number...?

Make sure that each student has the emergency number for your centre

Keeping your centre informed...?

Keep talking on your group chats about what time meeting points are etc.

Managing timings...?

Once you have finished your walking tour allocate an amount of time for free time. Make sure you allow enough time to head back to the centre for the next activity/ meal time.



1 EAGLE TOWER & 91 MONTPELLIER TERRACE

2 MONTPELLIER GARDENS & MONTPELLIER SPA

3 COURTYARD & ARCADE

4 MONTPELLIER WALK

5 THE QUEENS HOTEL

6 THE HOLST STATUE

7 CHELTENHAM TOWN HALL

8 NEPTUNE'S FOUNTAIN

9 MUNICIPAL OFFICES

10 MINOTAUR & THE HARE



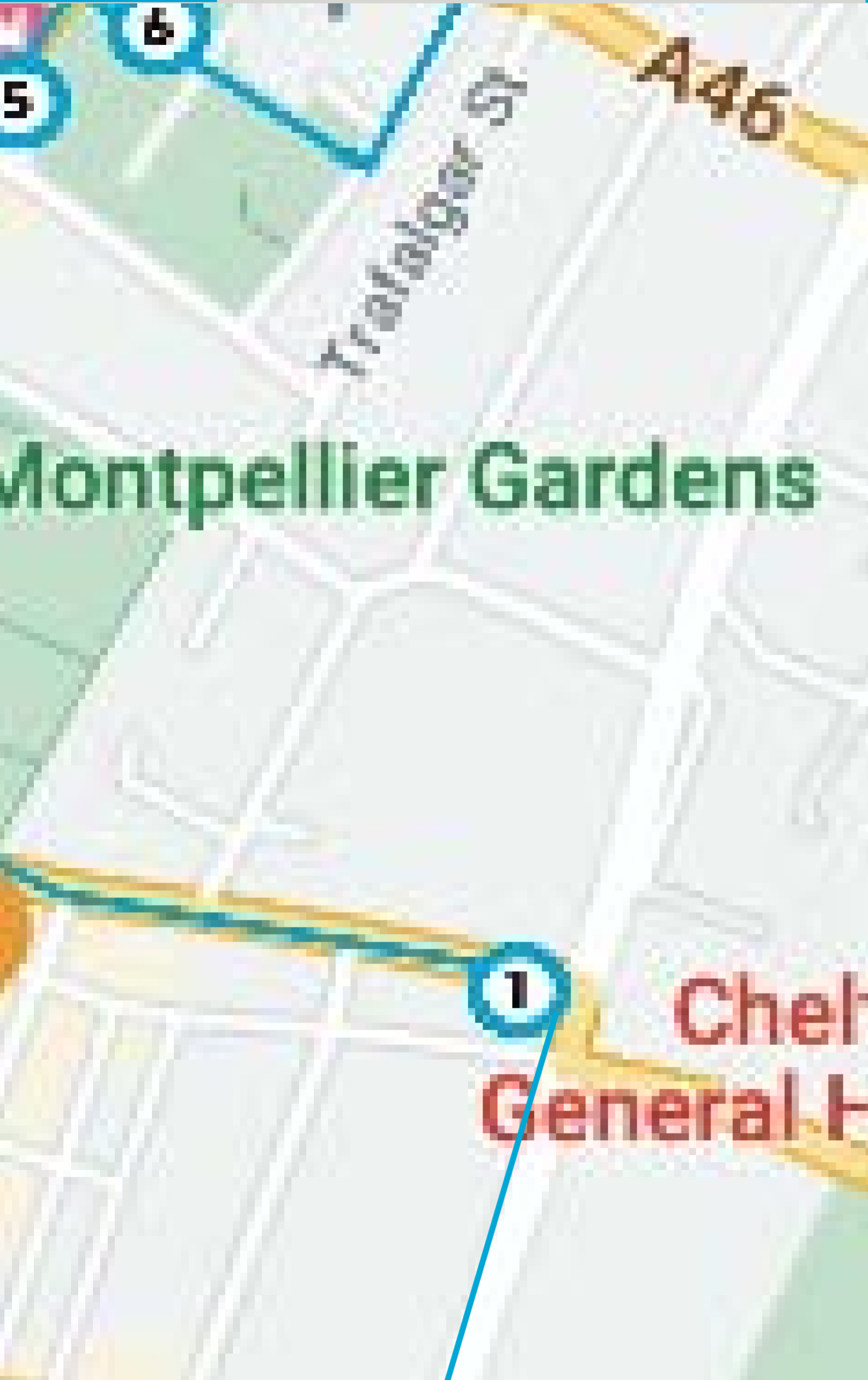
COACH DROP OFF / PICK UP



TOILET POINT

1

EAGLE TOWER & 91 MONTPELLIER TERRACE



DIRECTIONS

Turn right out of Cheltenham College and at the end of the Bath Road turn left onto Montpellier Terrace.

Cross at the traffic lights

ENTRANCES INFO?

Tickets
N/A

TAKE NOTE:

Talk to the other ALs and group to outline the day plan and pick up point and time.



The tower is an example of 1960's office block architecture. This is Cheltenham's tallest building, but how many feet tall is it?

A. 153, B. 161, C 172

Wilson was the doctor and artist on Captain Scott's fateful trip to the South Pole in 1910 -12.

- They reached the South Pole on 18 January 1912, only to discover...?

A group of Norwegians had already reached it 33 days earlier. The whole group of men all died on their way back home.



FAST FACTS

WHEN?

EAGLE TOWER was opened in October 1968

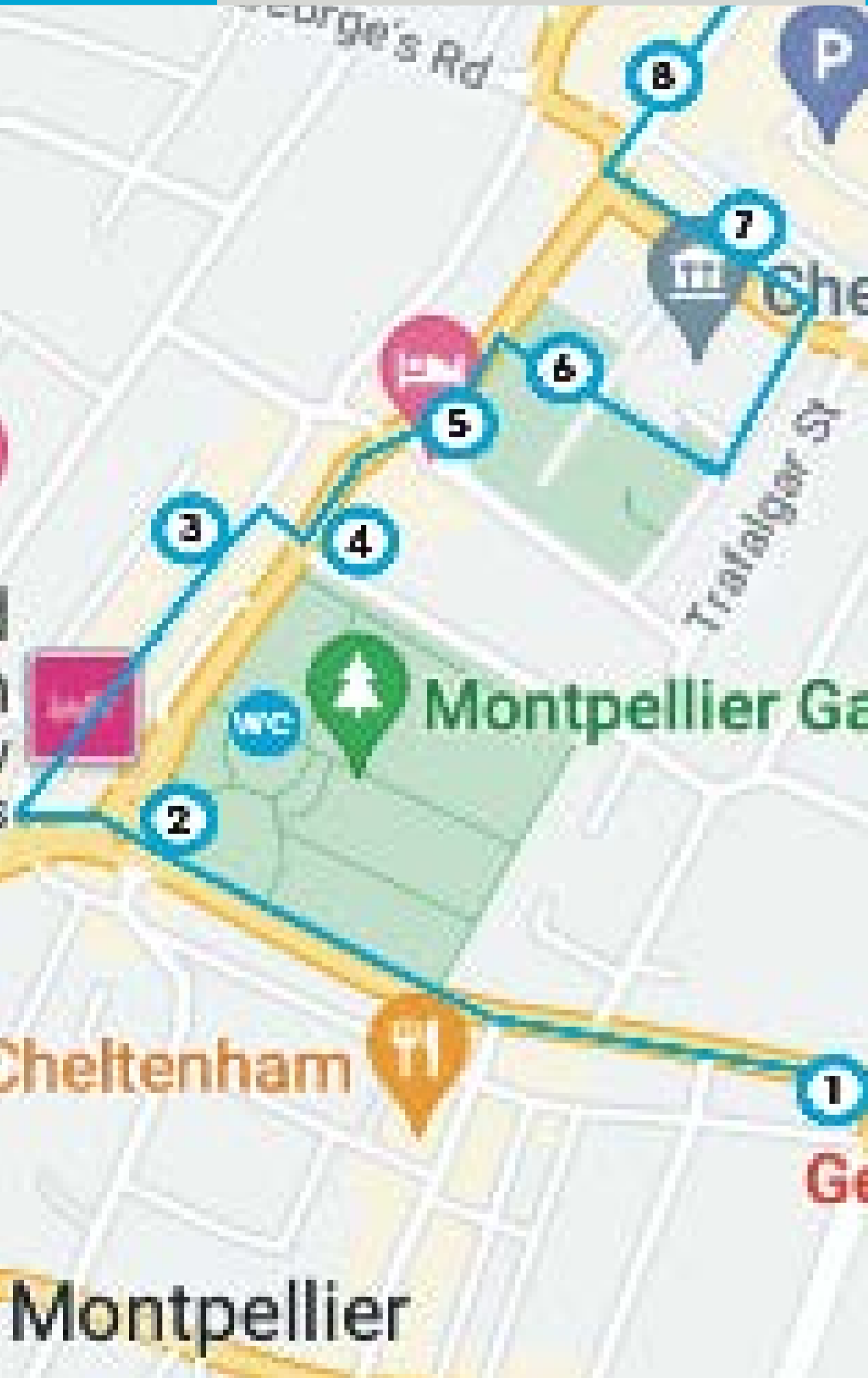
91 MONTPELLIER TERRACE: was the birthplace of Edward Wilson in 1872.

WHAT?

EAGLE TOWER: The tower was first used by Eagle Star Insurance and is now rented out floor by floor to several different companies.

POINTS OF INTEREST

Many Cheltenham residents think the tower is ugly but a lot of other people are so used to it now, they think Cheltenham would look strange without it. What do you think?



DIRECTIONS

Carry on along Montpellier Terrace and cross round the roundabout on the right side passing the corner of Montpellier Gardens.

ENTRANCES INFO?

Tickets
N/A

TAKE NOTE:

When speaking to the group be mindful of the people around you, try keep the group close to you and on one side of the path

This is a great spot for a Dusemond photo!



The gardens were originally developed as pleasure gardens, a place for everyone to meet and walk together and a place for the Pump Room, as it is a spa town. **What does that mean?**

A spa town is a resort town based on a mineral spa (a developed mineral spring). Patrons visit spas to “take the waters” for their purported health benefits.

By the 1830s, the gardens were home to a glass house filled with exotic plants, a Chinese pagoda with bandstand and an ornamental fountain.

Do you recognise any of the plants/flowers you can see?



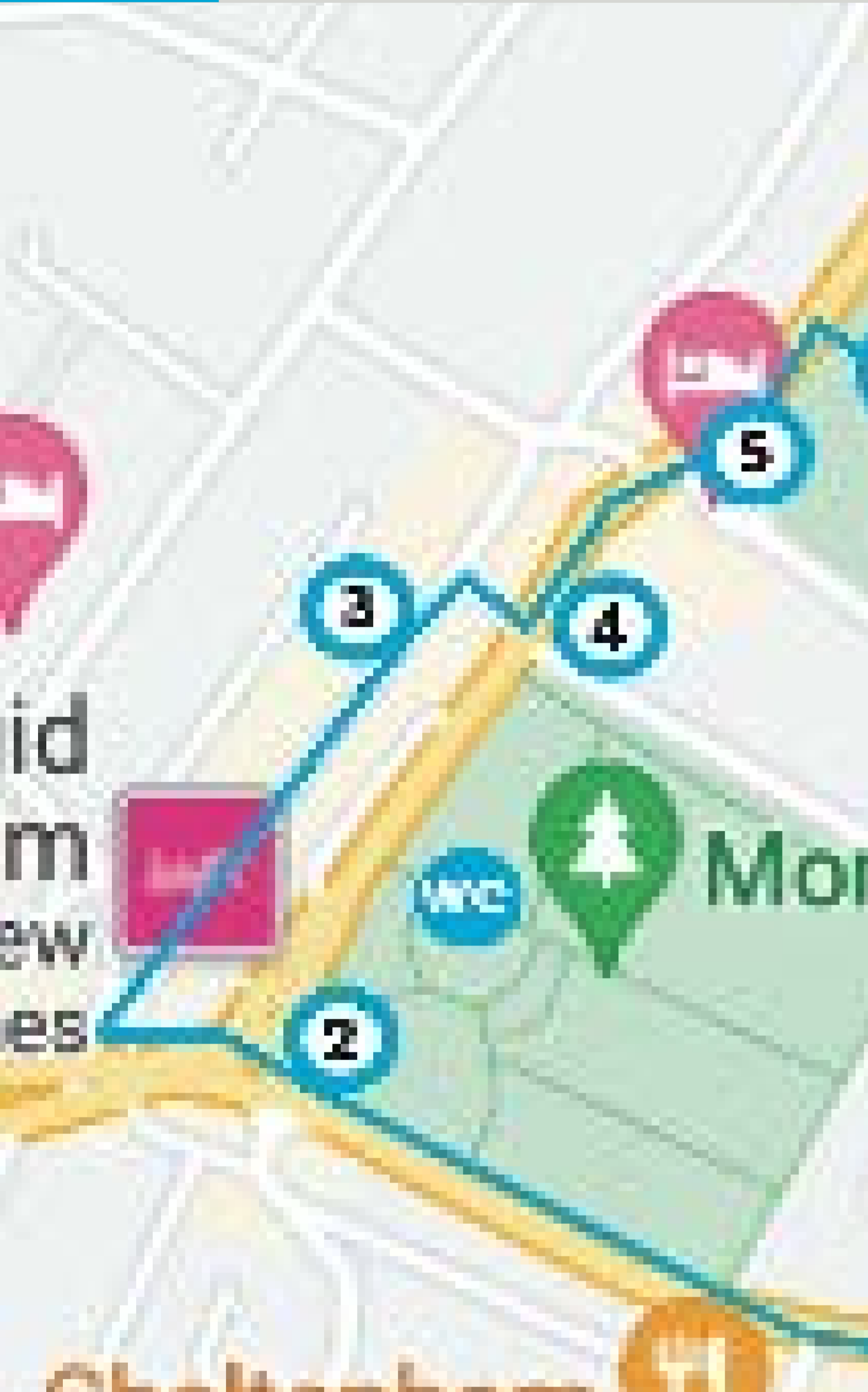
FAST FACTS

WHEN? WHAT?

The development of Montpellier Spa and estate was carried out at the beginning of the 19th century by Henry Thomson on a site originally known as Trafalgar Field

POINTS OF INTEREST

Dating from 1817 Montpellier was the most fashionable spa of the period. In 1809, Thompson built the first Pump Room, which was knocked down in 1817 and replaced with the current building. Eight years later the architect, John Papworth, added the domed circular room which became known as the Rotunda. It has been a bank since 1882.



DIRECTIONS

Cross over Montpellier and walk round the end of the rotunda buildings to head down Montpellier Street.

ENTRANCES INFO?

Tickets

N/A

TAKE NOTE:

When crossing the roads using crossings where possible



There were originally 16 small shops located here.

What shops do you want to visit whilst you're in the UK?

QUIZ QUESTIONS

Montpellier arcade is a fantastic example of a Victorian shopping complex. The entrance and the buildings inside are now **Grade II listed**... **What does this mean?**

- a. site of exceptional importance
- b. site of special interest
- c. site of no real importance



FAST FACTS

WHEN? WHAT?

The courtyard in Montpellier Street is a 1985 development around a sunken piazza.

POINTS OF INTEREST

In the 18th and 19th centuries the name of French spa town of Montpellier was recognised as being a pleasant healthy place – and that name was chosen in 1809 by Henry Thompson for his newly established spa.



DIRECTIONS

Head down the alleyway opposite the courtyard, stop at the end in front of ASK Italian.



ENTRANCES INFO?

Tickets

N/A

TAKE NOTE:

When walking along busy roads ensure the group is sticking to the paths and leaving space for other people



QUIZ QUESTIONS



How many statues can you count/
see along the walk?

32

What are the statues missing?

Their arms



FAST FACTS

WHEN? WHAT?

POINTS OF INTEREST

The Caryatids or 'armless' ladies support the shops along Montpellier walk. They are loosely based on the Acropolis in Athens and were designed by London artist Rossi.



DIRECTIONS

Continue walking down Montpellier walk and cross over right to head in front of the Queens Hotel. Crossing again over onto the gardens.

ENTRANCES INFO?

Tickets

N/A

TAKE NOTE:

When walking along paths ensure the group is leaving space for other people and keeping up



The Queens Hotel was designed by two brothers, Robert William and Charles Jearrad, who modelled the classical columns on the front of the hotel on what temple in Rome?

- a. The temple of Jupiter
- b. The temple of Saturn
- c. The temple of Venus

It cost £47,000 to build in 1883, which is **how much** in today's money?

£4,000,000



FAST FACTS

WHEN?

Standing at the top of the promenade it was completed in 1883.

WHAT?

As Cheltenham's best hotel it has received royalty and many famous people.

POINTS OF INTEREST

It was named in honour of Queen Victoria whose coronation fell in the same year



DIRECTIONS

Follow along the edge of Imperial Gardens and follow the path right to the fountain.

ENTRANCES INFO?

Tickets

N/A

TAKE NOTE:



What song is he most recognised for composing? **HINT: we live on one**

The planets

(play it on your phone if you can!)

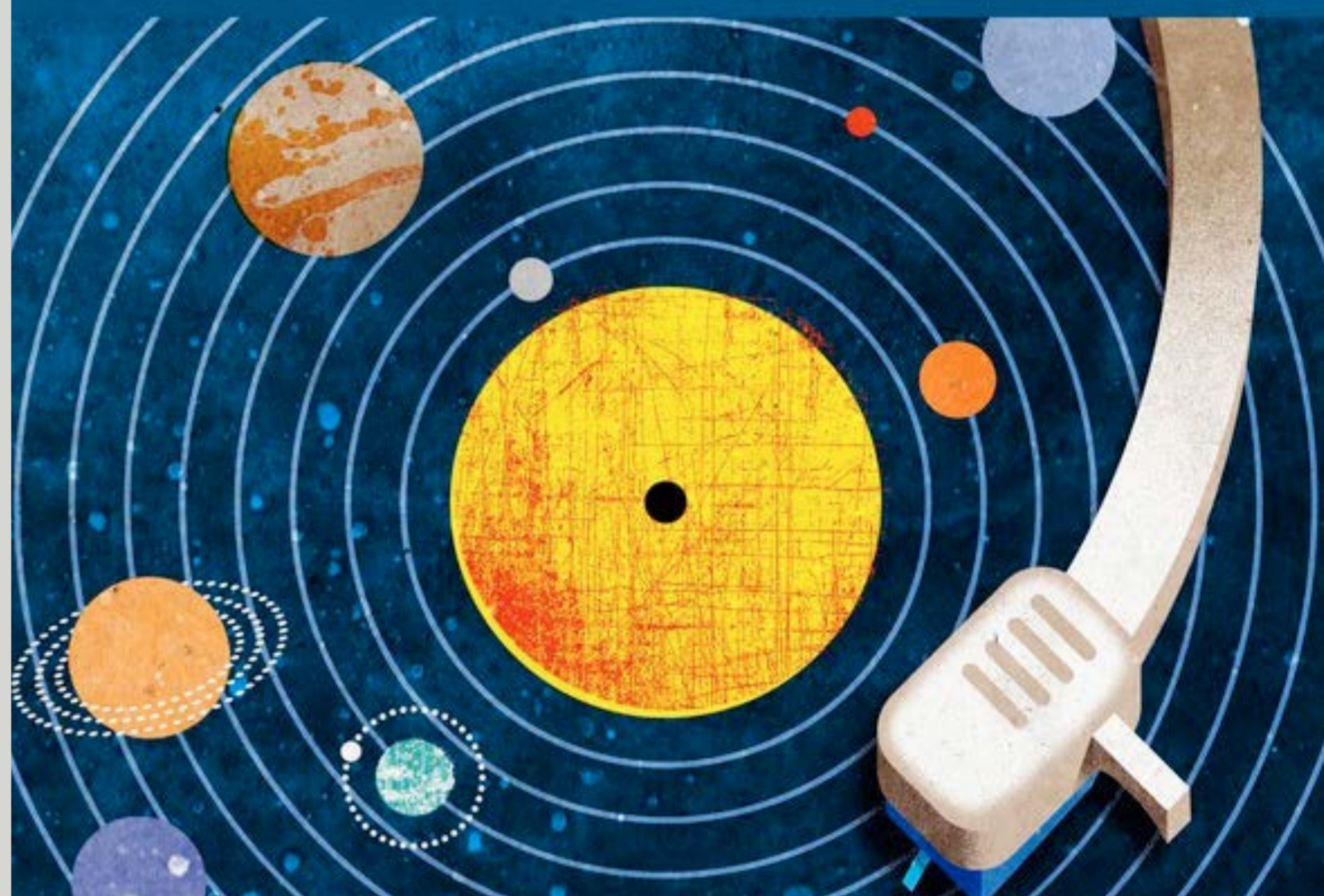
What do you think the seven plaques represent?

The planets

Can you name them?

Mercury, Venus, Mars, Neptune, Uranus, Saturn, Jupiter

THE PLANETS



FAST FACTS

WHEN?

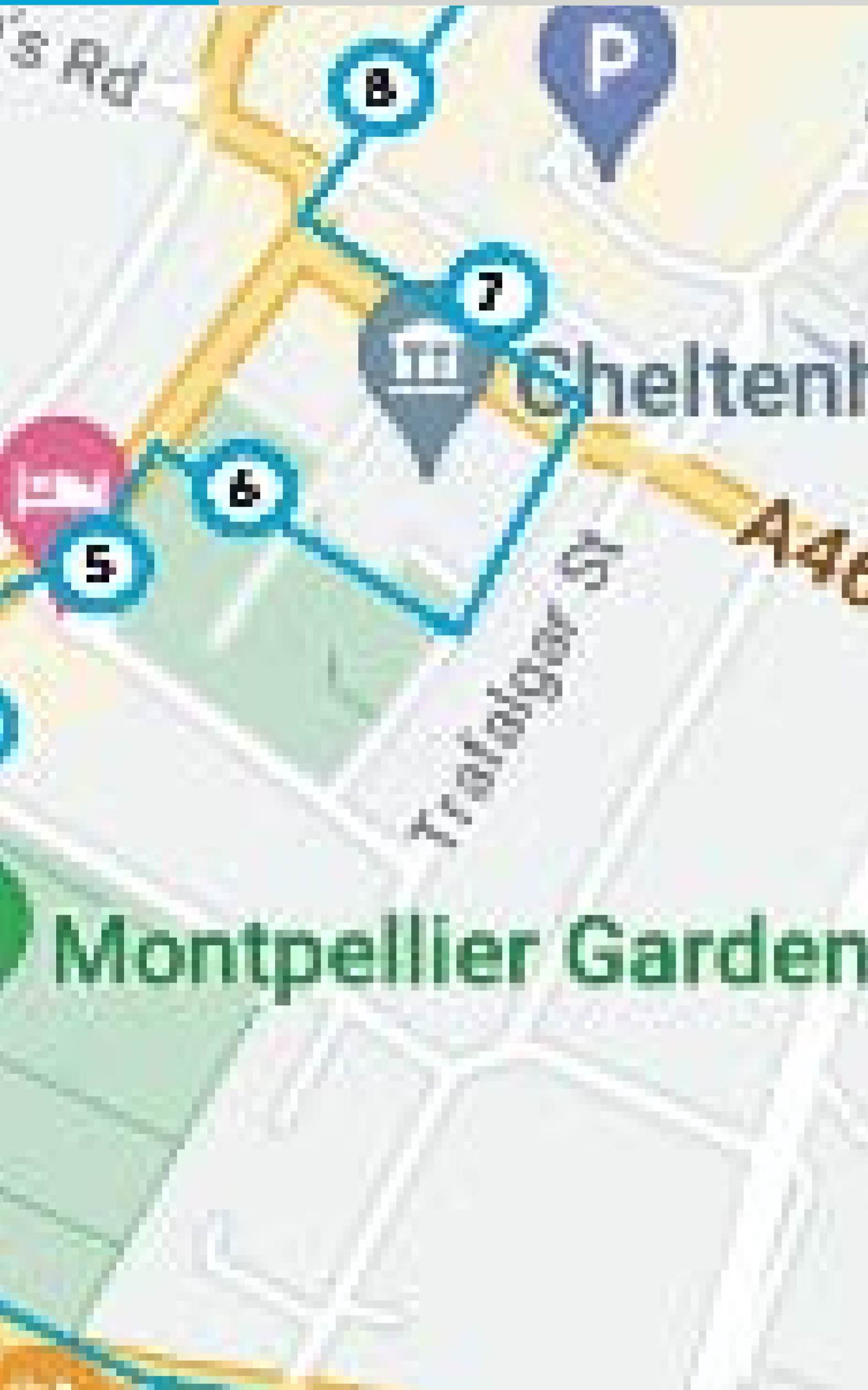
It was unveiled in 2008.

WHAT?

The bronze statue of composer and musician Gustav Holst, who died in 1934

POINTS OF INTEREST

Holst excluded the Earth from his work, because it has no astrological significance, and Pluto, which was not discovered until 1930. He died in 1934, but there is little evidence that he considered updating his piece. “The Planets” quickly became a beloved and influential work, perhaps the best-known piece by a 20th-century Briton.



DIRECTIONS

Follow the path across the gardens and left down the side of the town hall, turning right at the end.

ENTRANCES INFO?

Tickets

N/A

TAKE NOTE:

To avoid blocking the path ensure the group are kept to one side when stopping anywhere



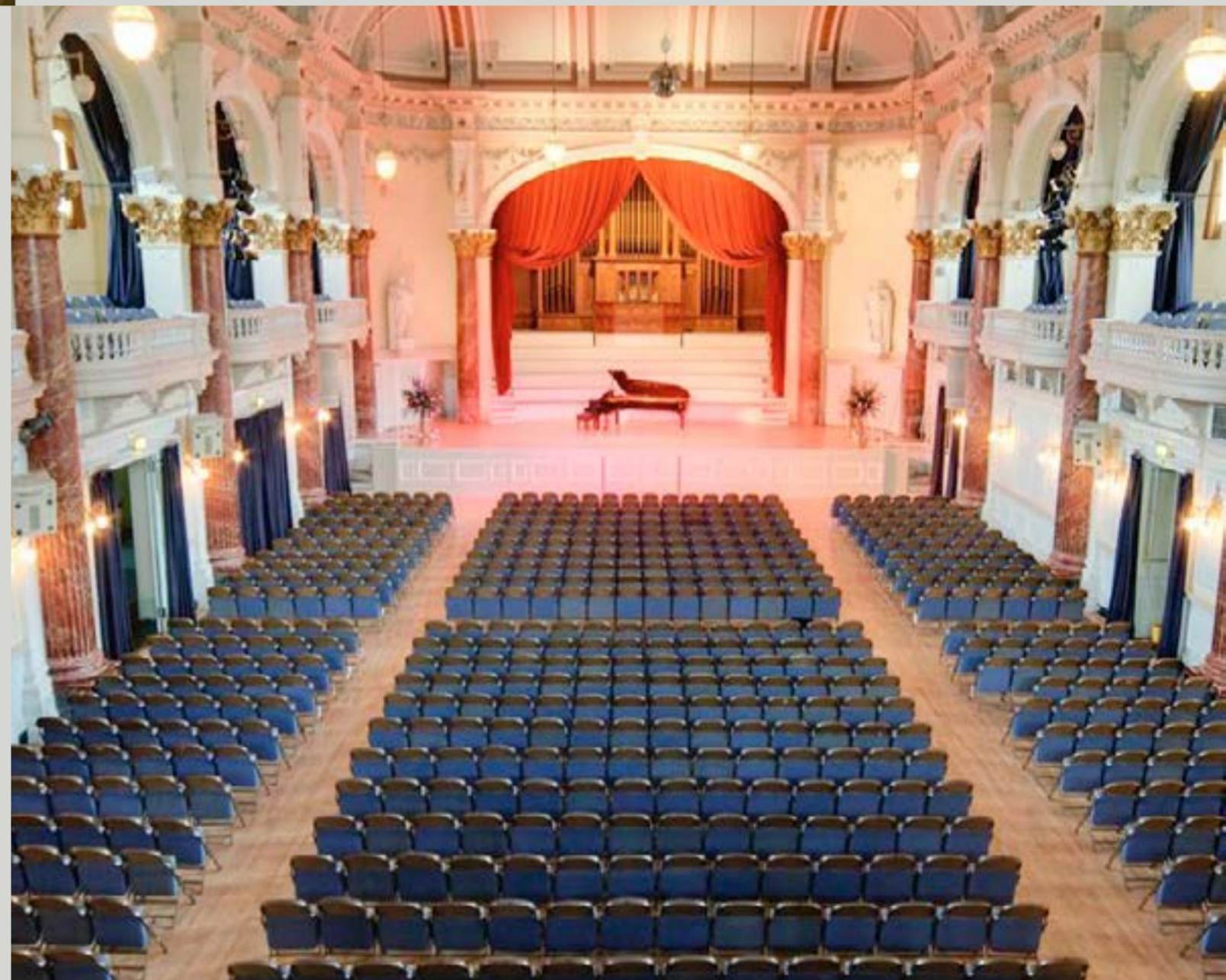
This building is considered an anomaly.. **what does that mean?**

An abnormal thing; a marked deviation from the norm or a standard

Its grandiose scale and stonework is in sharp contrast to the restrained regency building surrounding it.

It is now the centre for musical and cultural events for the town holding festivals for literature, jazz and science events.

Take a look if there are any signs/posters.. discuss what's showing!



FAST FACTS

WHEN? WHAT?

The Edwardian Baroque Town Hall of 1903

POINTS OF INTEREST



DIRECTIONS

Cross over at the lights down the Promenade and cross right to stop in front of the Neptune's fountain.

ENTRANCES INFO?

Tickets

N/A

TAKE NOTE:

To avoid blocking the path ensure the group are kept to one side when talking



The fountain utilises the waters from the river Chelt which runs beneath it.

Designed by Borough engineer Joseph Hall who was influenced by which Italian fountain?

The Trevi fountain



FAST FACTS

WHEN? WHAT?

Made from Portland stone in 1893 by a local sculptor R. L. Boulton, the statue depicts Neptune being drawn by sea horses.

POINTS OF INTEREST

The fountain was officially unveiled by the Mayoress of Cheltenham on 3rd October 1893.



DIRECTIONS

Walk a little further down to the centre in front of the war memorial.

ENTRANCES INFO?

Tickets

N/A

TAKE NOTE:

To avoid blocking the path ensure the group are kept to one side when talking about the museum



Built originally as homes but it is now home to Cheltenham's council buildings and Tourist Information.

What style is the architecture of this building?

Classical



FAST FACTS

WHEN? WHAT?

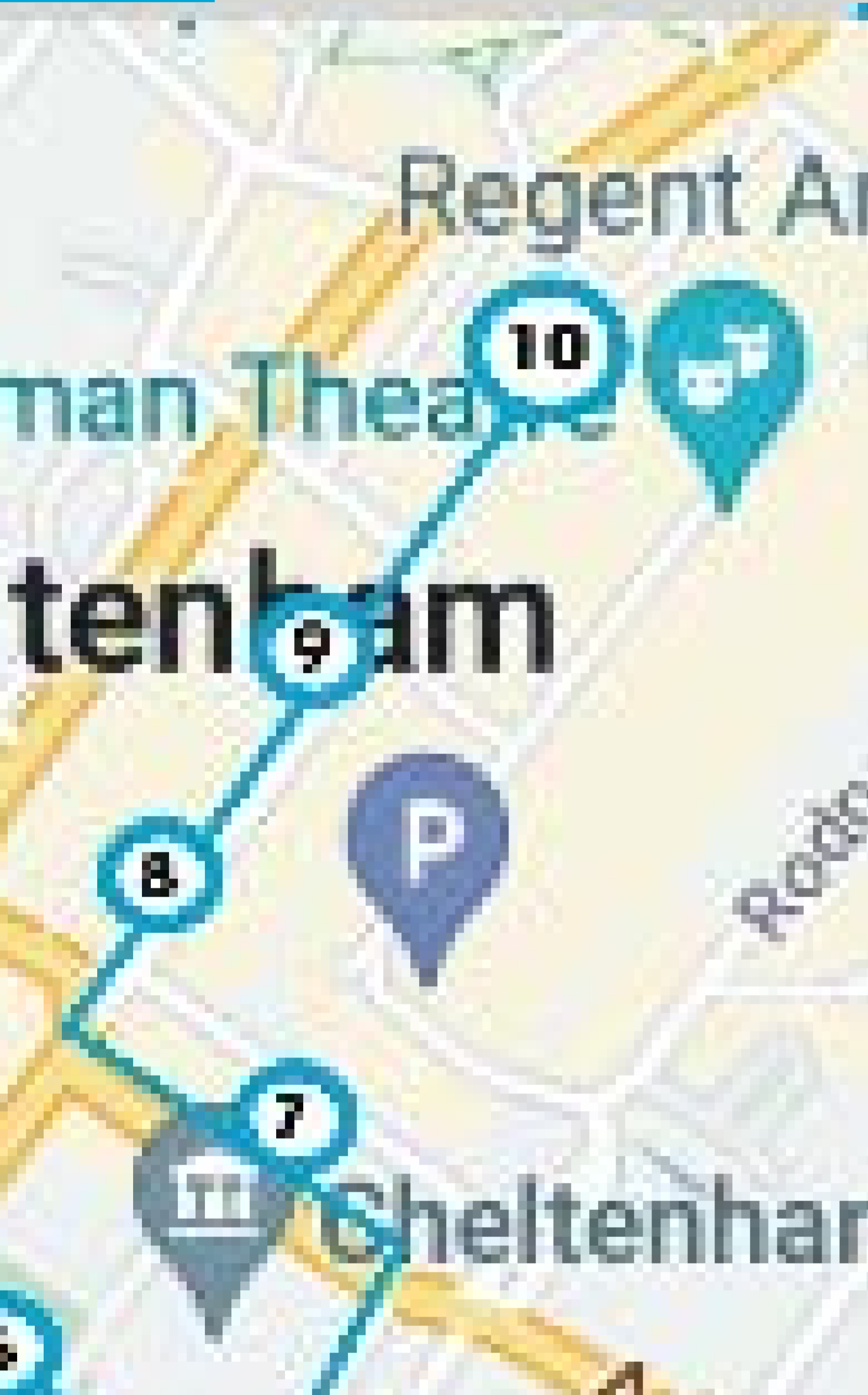
One of the finest Regency buildings in Cheltenham completed in 1835

POINTS OF INTEREST

A war memorial commemorating local service personnel who had died in the First World War was unveiled by Major-General Sir Robert Fanshawe in the middle of the Long Garden, in front of the central section of the building, on 1 October 1921.

10

MINOTAUR & THE HARE



DIRECTIONS

Walk on down and cross at the end of the Long Garden across into the pedestrianised area.

ENTRANCES INFO?

Tickets

N/A

TAKE NOTE:

This will be your meeting point if you are giving your group free time.

This is your opportunity to tell them any challenges they have, to stay in groups of 2 minimum, and to return to the meeting point on time.



It stands taller than any person and is made of reclaimed scrap metal; up close you can spot certain objects and materials, what can you see?

Cogs and cooker hobs, screws and all sorts, creating a really textured, tactile metal finish.

What is a minotaur?

A monster with a bull's head and a man's body - it comes from greek mythology



FAST FACTS

WHEN? WHAT?

The Minotaur and the Hare is a bronze sculpture created by Sophie Ryder in 1995.

POINTS OF INTEREST

Use this as your meeting point if you are having free time